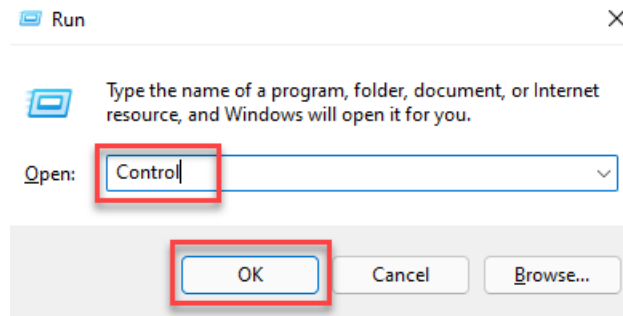


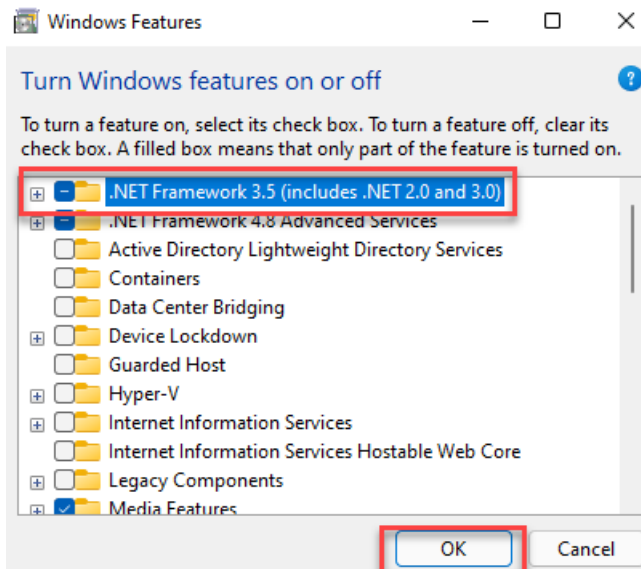
CalEEMod Installation Instructions for Computers with Microsoft Windows 11

Please follow these instructions in sequential order:

1. Turn on .NET Framework 3.5 (include .NET 2.0 and 3.0)
 - a) Press Win + R to open Run - - > Type Control and click OK



- b) In the Control Panel, go to Programs - - > Programs and Features - - > Turn Windows feature on or off - - > Check the box for “.NET Framework 3.5 (includes .NET2.0 and 3.0)” - - > Click on OK.





CalEEMod Installation Instructions for Computers with Microsoft Windows 11

2. Install Microsoft SQL Server Compact 4.0

- a) Download [SSCERuntime_x64-ENU.exe](#)
- b) Double click on SSCERuntime_x64-ENU.exe and follow the on-screen instructions to install Microsoft SQL Server Compact 4.0.

3. Install 32-bit Microsoft Access Database Engine 2010 Redistributable.

- a) Go to <https://www.microsoft.com/en-us/download/details.aspx?id=13255>, click on Download - - > select "AccessDatabaseEngine.exe" (25.3 MB) - - > Click on Next
- b) Go to C: drive - - > Create a new folder "MADE" - - > Copy the downloaded 32-bit Microsoft Access Database Engine 2010 Redistributable (AccessDatabaseEngine.exe) installer to that folder
- c) Press Win + R to open Run - - > Type CMD and then press CTRL+SHIFT+ENTER from the keyboard to run the command prompt as an administrator
- d) If the User Account Control dialog box appears, confirm that the action it displays is what you want, and then click Yes.
- e) In Administrator: Command Prompt window - - > Type in "cd C:\MADE" and press ENTER
- f) Type in "AccessDatabaseEngine.exe /passive" and press ENTER
- g) 32-bit Microsoft Access Database Engine 2010 Redistributable should be installed automatically.
- h) See screenshot below:

```
Administrator: C:\Windows\system32\CMD.exe
Microsoft Windows [Version 10.0.22000.493]
(c) Microsoft Corporation. All rights reserved.

C:\Windows\system32>cd c:\MADE
c:\MADE>AccessDatabaseEngine.exe /passive
c:\MADE>_
```



CalEEMod Installation Instructions for Computers with Microsoft Windows 11

4. Install CalEEMod 2020.4.0.35

- a) Download the installation file [CalEEMod.WixSetup.Bootstrapper_2020.4.0.35](#)
- b) Copy the downloaded installer (CalEEMod.WixSetup.Bootstrapper_2020.4.0.35.exe) to the folder C:\MADE created in Step 3.
- c) Press Win + R to open Run - - > Type CMD and then press CTRL+SHIFT+ENTER from the keyboard to run the command prompt as an administrator
- d) If the User Account Control dialog box appears, confirm that the action it displays is what you want, and then click Yes.
- e) In Administrator: Command Prompt window - - > Type in “cd C:\MADE” and press ENTER
- f) Type in “CalEEMod.WixSetup.Bootstrapper_2020.4.0.35.exe /s” and press ENTER
- g) CalEEMod 2020.4.0.35 should be installed “silently”
- h) See screenshot below:

```
Administrator: C:\Windows\system32\CMD.exe
Microsoft Windows [Version 10.0.22000.493]
(c) Microsoft Corporation. All rights reserved.

C:\Windows\system32>cd c:\MADE

c:\MADE>AccessDatabaseEngine.exe /passive

c:\MADE>CalEEMod.WixSetup.Bootstrapper_2020.4.0.35.exe /s

c:\MADE>
```