

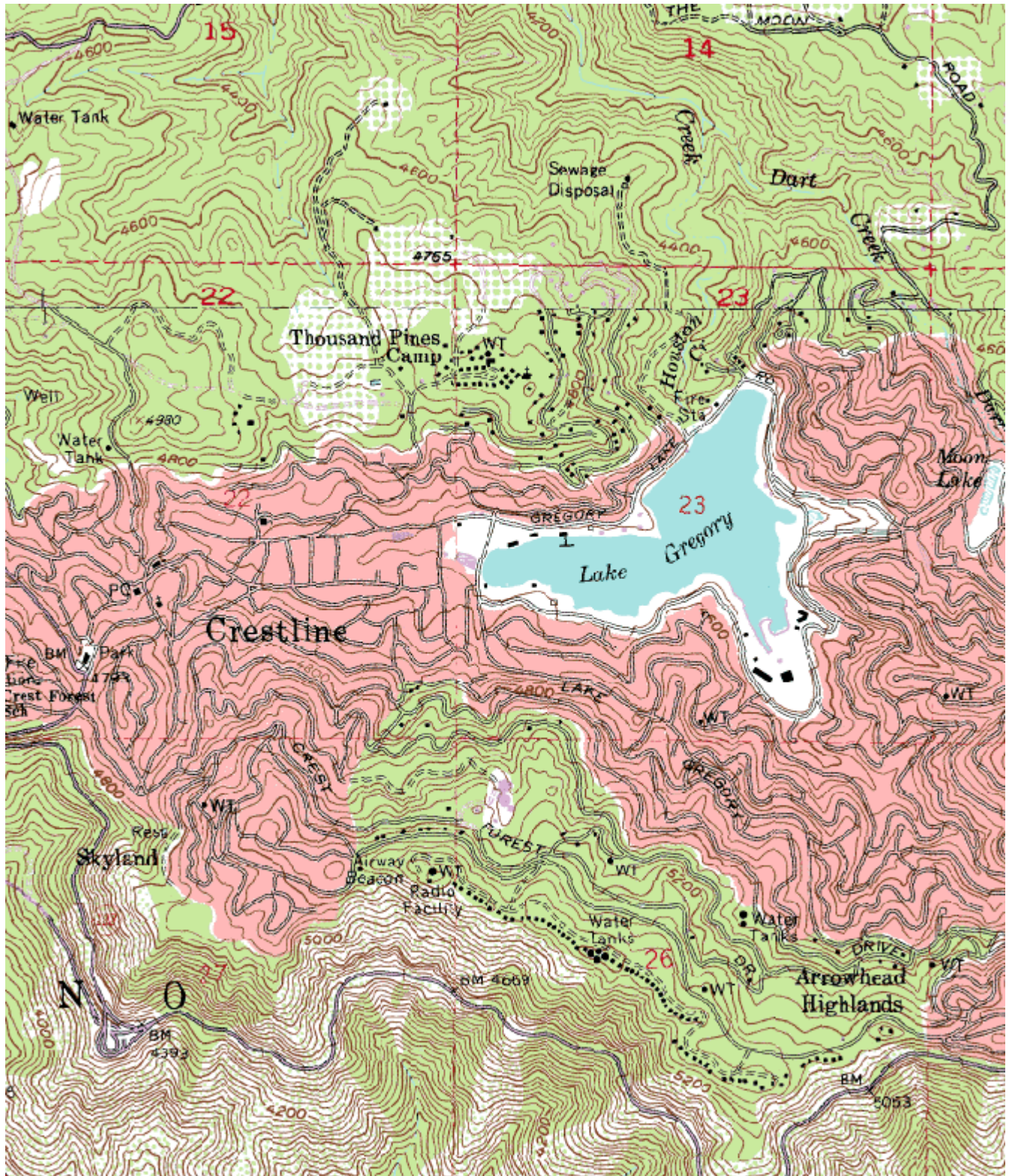
South Coast AQMD Site Survey Report for Lake Gregory (Crestline)

Last updated March 2009



AIRS Number	ARB Number	Site Start Date	Reporting Agency and Agency Code
060710005	36181	10/73	South Coast AQMD (061)

Site Address	County	Air Basin	Latitude	Longitude	Elevation
24171 Lake Dr Crestline, CA 92325	San Bernardino	South Coast	34° 14' 35"	117° 16' 20"	1387



Site Survey Report

Siting Information

Site Name: Lake Gregory (Crestline)	Date: 03/10/09	ARB Number: 36181	State Code: 060710005
Address: 24171 Lake Dr Crestline, CA 92325	Latitude: 34° 14' 35"	Longitude: 117° 16' 20"	Elevation (m): 1387
	Senior AQIS: Keith Brown	Site Technician: Twyla Miner	Site Phone: (909) 338-2557
Operating Agency: South Coast AQMD			

General Siting Conditions

Station Temperature Controlled: Yes Recorded: Yes	Traffic Description: Residential Distance: 25 meters Count (Veh/Day): 500	Topography Site: Mountainous Region: Mountainous	Predominant Wind Direction: SW Arc Air Flow (Deg): 180 Degrees Probe Last Cleaned: 04/22/08		
		Meteorology Located With Instruments: Yes	Non-vehicular Local Sources Description: None Distance: N/A Direction: N/A	QA Manual Approved: Yes Agency: SCAQMD	Manifold Clean: Yes Cleaning Schedule: 6 Months Autocalibrator Type: Sabio 4010
				Urbanization: Rural	Site Survey Complete: Yes
Ground Cover: Dirt	Logbook Up To Date: Yes				

Action Items

Comments

Detailed Site Information

Site Name	Lake Gregory (Crestline)			
AQS ID (AIRS #)	060710005			
GIS coordinates	Latitude: 34° 14' 35" Longitude: 117° 16' 20"			
Location	Park – Lake Front			
Address	24171 Lake Dr, Crestline, CA 92325			
County	San Bernardino			
Dist. to road	25 meters			
Traffic count	500 veh/day			
Groundcover	Dirt			
PEP audit?	N/A			
NPAP audit?	12/12/08			
Flow audit?	07/02/07			
Representative Area	40140-Riverside-San Bernardino-Ontario, CA MSA			
Pollutant	Ozone	Ozone (Back-Up)	PM10-SSI	
Monitor obj	HIGHEST CONCENTRATION	HIGHEST CONCENTRATION	REPRESENTATIVE CONCENTRATIONS	
Spatial scale	Neighborhood Scale	Neighborhood Scale	Neighborhood Scale	
Sampling method	Thermo	API/Teledyne 400	Sierra Andersen 1200	
Serial #	116250	532-S	N/A	
Property #	N/A	N/A	4982	
Last Calibration Date	10/29/08	04/27/08	02/01/09	
Analysis method	N/A	N/A	Weighed by SCAQMD lab	
Start date	10/01/73	10/01/73	10/01/73	
Operation schedule	1:1	1:1	1:6	
Sampling season	All Year	All Year	All Year	
Probe height	3.0	3.0	4.0	
Distance from supporting structure	1.0	1.0	1.9	
Distance from obstructions on roof	N/A	N/A	N/A	
Distance from obstructions not on roof	N/A	N/A	N/A	
Distance from trees	5.0	5.0	8.0	
Distance to furnace or incinerator flue	N/A	N/A	N/A	
Distance between collocated monitors	N/A	N/A	N/A	
Unrestricted airflow	No	No	No	
Probe material	Teflon	Teflon	N/A	
Residence time	14.4	14.4	N/A	
Will there be changes within the next 18 months?	Yes	Yes	Yes	
Is it suitable for comparison against the annual PM2.5?	N/A	N/A	N/A	

Frequency of flow rate verification for manual PM samplers audit	N/A	N/A	Monthly	
Frequency of flow rate verification for automated PM analyzers audit	N/A	N/A	N/A	
Frequency of one-point QC check (gaseous)	Nightly	Nightly	N/A	
Last Annual Performance Evaluation (gaseous)	09/30/08	09/30/08	N/A	
Last two semi-annual flow rate audits for PM monitors	N/A	N/A	06/30/08, 12/08/08	

**Lake Gregory (Crestline)
Site Photos**



Looking North from the probe.



Looking East from the probe.



Looking South from the probe.



Looking West from the probe.

**Lake Gregory (Crestline)
Site Photos (Cont.)**



Looking at the probe from the North.



Looking at the probe from the East.



Looking at the probe from the South.

photo not available

Looking at the probe from the South.